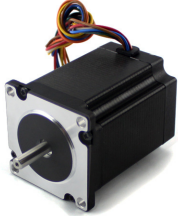


Spark Motors Pvt Ltd

Model: NEMA24 Stepper motor-SM60 HS (1.8 degree)



General Specification:

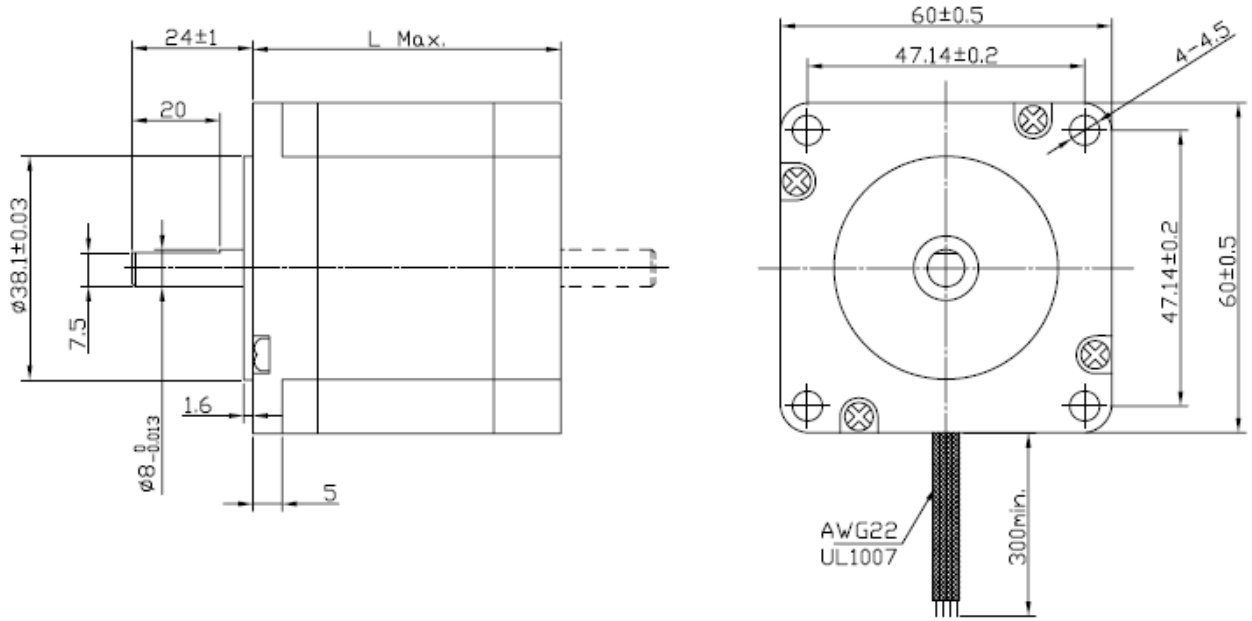
Step Accuracy ----- ±5%
 Resistance Accuracy ----- ±10%
 Inductance Accuracy ----- ±20%
 Temperature Rise ----- 80°C MAX.
 Ambient Temperature Range ----- -20°C~ +50°C
 Storage Temperature Range ----- -30°C~ +60°C
 Insulation Resistance ----- 100M Ω MIN. 500V DC
 Dielectric Strength ----- 500V AC 1min
 Radial Play ----- 0.02mm MAX. (450g Load)
 End Play ----- 0.08mm MAX. (450g Load)
 Max. radial force ----- 75N
 Max. axial force ----- 15N

Electrical Specification:

Model No.	Step Angle	Motor Length	Current /Phase	Resistance /Phase	Inductance /Phase	Holding Torque	Lead wires	Detent Torque	Rotor Inertia	Motor Weight
	(°)	(L)mm	A	Ω	mH	N.m	No.	g.cm	g.cm ²	Kg
SM60HS47-2008	1.8	47	2	1.5	2	0.78	8	500	275	0.6
	1.8	47	2.8	0.75	2	1.1				
	1.8	47	1.4	3	8	1.1				
SM60HS56-2008	1.8	56	2	1.8	3.6	1.17	8	700	300	0.77
	1.8	56	2.8	0.9	3.6	1.65				
	1.8	56	1.4	3.6	14.4	1.65				
SM60HS67-2008	1.8	67	2	2.4	4.6	1.5	8	900	570	1.2
	1.8	67	2.8	1.2	4.6	2.1				
	1.8	67	1.4	4.8	18.4	2.1				
SM60HS88-2808	1.8	88	2	3	6.8	2.2	8	1000	840	1.4
	1.8	88	2.8	1.5	6.8	3.1				
	1.8	88	1.4	6	27.2	3.1				

***Note:** We can also manufacture products according to customer's requirements.

**Dimensions:
(Unit=mm)**



Wiring Diagram:

